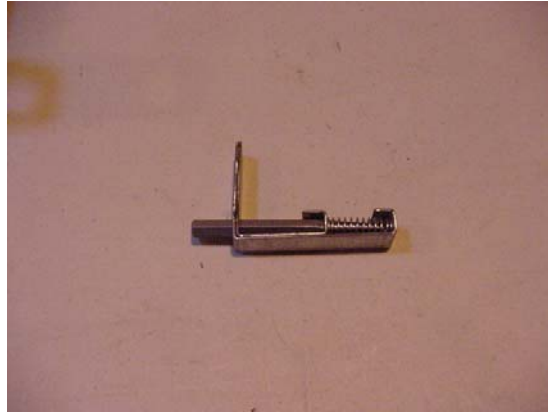


## Centerpunch Instructions

When applying a door, window, or louver frame to a subframe, installers do not get more than 1/16" of an allowable distance away from the centers of the holes they are drilling to allow for maximum adjustability. Fabrication Designs, Inc. has developed an easy to use new tool to take out the guesswork for our products. Our centerpunch tool enables installers of our products to achieve accuracy when drilling and tapping their own holes into the subframes for mounting our doors, windows, and louvers.



Because the orientation of the slotted holes in the frames of doors, windows, and louvers are different, the tool must be held in a different manner for each different product type.

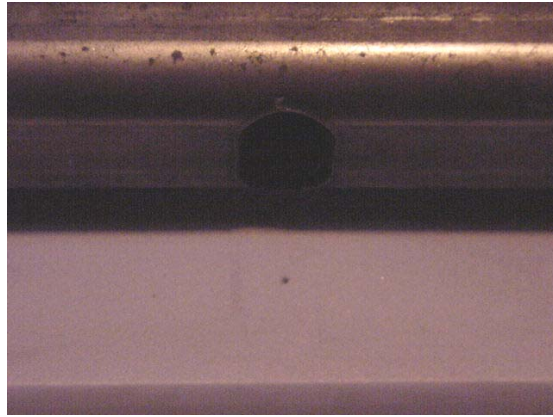
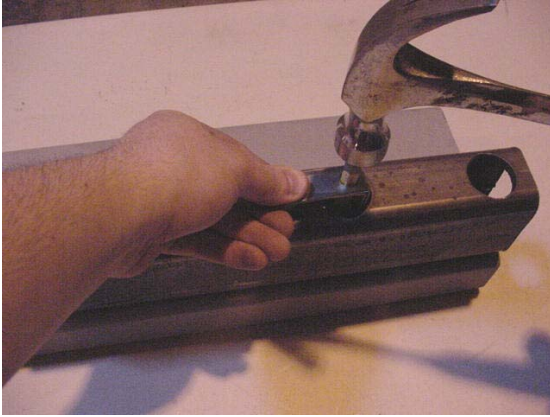
When centerpunching the subframe through a doorframe, hold the centerpunch tool vertically and insert into the frame anchor hole in the frame.



It does not matter if you hold the grip at the top or flip the tool over and hold it below the hole.



Once inside the tool will uniformly fit into the slotted hole of the doorframe and should come in contact with the subframe. At this point, take a hammer and hit the center of the punch on the centerpunch tool. Remove the tool from the door. You may now drill without inaccuracy.

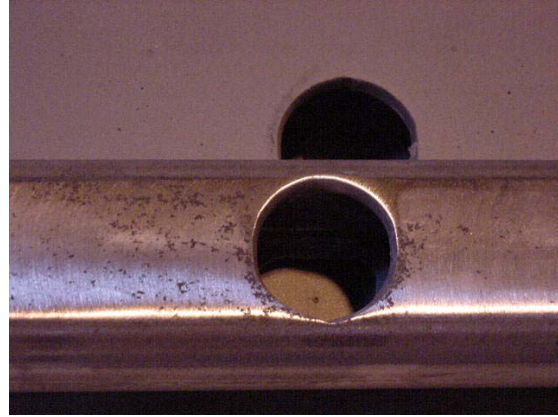


When centerpunching the subframe through a window or louver frame, hold the centerpunch tool horizontally and insert into the frame anchor hole in the frame.





Once inside the tool will uniformly fit into the slotted hole of the window or louver frame and should come in contact with the subframe. At this point, take a hammer and hit the center of the punch on the centerpunch tool. Remove the tool from the window or louver frame. You may now drill without inaccuracy.



Our tool is also uniquely designed to allow for fast and easy punch sharpening.

